



MIDDLEWICH PRIMARY SCHOOL

NEWSLETTER MAY 2025



Welcome to our May newsletter! We hope had a wonderful Easter break. As we move into the final term of the school year, things are certainly busy at Middlewich Primary School. With a packed calendar of school trips and PTFA events, there's lots to look forward to. It is of course a busy time in classrooms too as our children are hard at work as they complete their final term in their current year group. Please take a moment to check the diary dates below to stay informed about upcoming events.

DATES FOR YOUR DIARY

Thursday 8 th May	Y1 trip to Beeston Castle	
Friday 9 th May	5RS trip to London	All day
Monday 12 th May	Year 6 SATs week	12 th – 15 th May
Wednesday 14 th May	PTFA meeting	White Bear
Friday 16 th May	Sports' Day	KS1 am/KS2 pm
Wednesday 21 st May	PTFA school disco for KS1 and KS2	5pm KS1 6:30pm KS2
Thursday 22 nd May	School closes for half term	3:15pm/3:20pm
Friday 23 rd May	INSET Day	All day
Monday 2 nd June	School opens	8:40am
Monday 2 nd June	Y4 Arete 2-night residential visit	2 nd – 4 th June
Monday 9 th June	Y1 – Y5 class photographs	
Tuesday 10 th June	EYFS New intake induction meeting	6pm
Tuesday 10 th June	PTFA meeting	6pm at MPS
Tuesday 17 th June	Y5 Halle trip	Bridgewater Hall
Thursday 19 th June	Y5 Shakespeare performance	HOME Theatre
Friday 4 th July	Y2 trip to Macclesfield Forest	
Friday 4 th July	PTFA Summer Fair	5pm – 7:30pm
Tuesday 8 th July	Y3 and 4 Summer performance	1:15pm and 6:30pm
Wednesday 9 th July	Y3 and 4 Summer performance	6:30pm
Friday 11 th July	Y3 Liverpool World Museum visit	All day
Monday 14 th July	Y6 Chill Factore visit	All day
Friday 18 th July	School closes for summer	

School Visits

Since the last newsletter, our pupils have enjoyed a variety of enriching school trips. Year 2 had an adventurous time at Petty Pool in Northwich, taking part in a range of activities, including crate stacking, zip wire, archery, den building and roasting marshmallows. Year 4 visited Chester for the Dewa Roman experience, participating in workshops and even marching through Roman Chester! EYFS went to Tatton Park, where they visited the farm and explored the gardens, connecting their experience to traditional tales. Year 5 visited Murgatroyd's Brine Pump in Middlewich and enjoyed a guided tour around the historic site.

Residential Visits

Earlier this term, our year 3 children enjoyed a two-night residential visit to Lake Windermere. They were excited to visit Hill Top Farm, the home of Beatrix Potter, linking beautifully with their learning. They showed exceptional behaviour during their visit – well done, year 3!



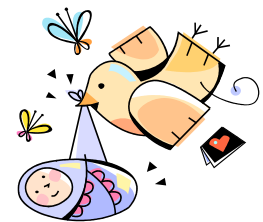
Hellos and Goodbyes

We say goodbye to Mrs Roberts. We want to say a huge thank you for all her hard work and wish her every success in the future. We are also saying a temporary goodbye to Miss Manley, as she begins her maternity leave over the summer.

This term, we warmly welcome Mrs Hayward, who is now teaching in year 3. She is already a familiar face, having supported many classes across the school over the past two years. We also welcome Mrs Plant, who has joined our team as a teaching assistant and will be supporting children in key stage one.

Congratulations to Miss Manley

We are delighted to share the news of the arrival of Miss Manley's beautiful baby boy, Reuben, born on Tuesday 22nd April. Congratulations from all of us at MPS!



Easter Multi-sport Camp

During the half term, on Tuesday 27th May, Mr Robinson and Mr Holbrooks will be running a multi-sport camp for year 1 to 6 pupils exclusively for pupils at Middlewich Primary School. The camp will take place from 9:30am to 2pm at Middlewich Primary School. For further details, please email srsportsltd@gmail.com

PTFA Easter Bingo

Thank you to all families who joined us for the Easter bingo last term – it was a lovely evening! A special thanks to the PTFA for organising this event and all the parents and carers for generously donating Easter Eggs.



PTFA News

A big thank you to our dedicated PTFA for organising so many successful events this year. Currently, the PTFA is busy planning the school disco on Wednesday 21st May and our summer fair, scheduled for Friday 4th July. If you would like to volunteer to help with events, they would love to hear from you. Please contact:

PTA@middlewichpri.cheshire.sch.uk.

Sunrise and Sunset Squad

We are pleased to offer both breakfast and after-school provision. To secure your child's place, please visit our online booking portal: <https://middlewich-primary.hivelink.co.uk/> For further details, visit our school website via the following link: <https://www.middlewichprimary.org/page/breakfast-after-school-club/136853>



Playground Equipment

A friendly reminder that the school playground equipment should not be used before or after school hours. We appreciate your cooperation and understanding in helping us maintain a safe environment for everyone.

Holidays in Term Time

We would like to remind all parents/carers that holidays should not be taken during school time. Holidays are only authorised in extremely exceptional circumstances. Unauthorised absences will be reported to the local authority, and a fixed penalty notice may be issued.

School Uniform Reminder

A gentle reminder of our school uniform expectations:

- Children must wear black school shoes (not black trainers/pumps).
- False nails, nail polish, make-up and dyed hair are not permitted.

For further details, please refer to our school uniform policy on our school website:

<https://www.middlewichprimary.org/page/school-policies/6748>

School Parking

A reminder that unauthorised vehicles are **not permitted on the school car park without prior authorisation from the headteacher**. Permits are allocated to Blue Badge holders only. Our school is very busy at the start and the end of the day and it is vitally important that no unauthorised vehicles enter the grounds for the safety of our children and their families.



Parking Reminder

Please be considerate when parking near school and please avoid blocking local residents' driveways. Thank you for your cooperation.

**Thank you for your continued support.
We look forward to another exciting half term ahead!**

Best wishes,
Mrs Reynolds and all the staff at MPS